

Metal Wall System Professional Manufacturers

ALUTILE[®]
SINCE 1995



3A Panel (Aluminum Core Panel)
The Five-Star Quality, Strong Warranty





Good smoothness, small rate of wind pressure change.

3A panel with multi composite layer has wonderful strength weight ratio. Uniform distribution of the middle layer's evenly arrangement hollow and trapezoid column overhanging block makes 3A panel in biggest stress with lightest weight. Its wind resistance performance is much better than aluminum composite panel and solid aluminum panel.



Super strong corrosion resistance, perfect self-cleaning performance.

Based on TiO_2 coating's super strong corrosion resistance and coating adhesive force, 3A panel has great advantages on pollution resistance and weather resistance which can resist the acid rain, air pollution and UV.

3A panel adopt special Ti coating technology and preserve the color over 30 years.





Various shapes, Meet the beauty of individuality.

Cut, bore & mill, curve at random as per client's request to fully express the idea of designer.



Superior fire resistance, meet the requirement of fire protection.

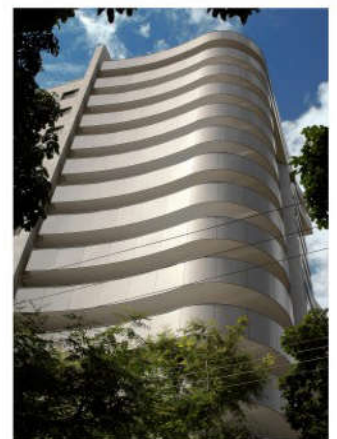
Main material of 3A is non-combustible, completely meet fire proof standard for curtain wall.



Light weight, Easy to process and install.

Easy to transport for its light weight, simple installation method, convenient and efficient.

Apparently shorten the project period without limited by climate, season and environment.



The characteristics comparison between 3A panel and other metallic cladding materials

Performance Index	Aluminum Composite Panel	Aluminum Solid panel	Aluminum honeycomb panel	3A panel
Structure type	Sandwich structure, The LDPE middle layer compounded with top and bottom alloy aluminum sheet.	All aluminum structure.	All aluminum structure.	All aluminum structure.
Wind load resistance deformation rate	★★★★★ Small	★★★ Big	★★★★★★ Small	★★★★★★ Big
Structure safety	★★★★ High rigidity-to-weight ratio.	★★★★★★ High structure strength.	★★★★★ High rigidity-to-weight ratio.	★★★★★★ High peeling strength by continuous polymer adhesive technology, same rigidity-to-weight ratio as Aluminum honeycomb panel.
Appearance index	★★★★★★ Perfect surface evenness, continuity roller coating technology, uniform color.	★★★ Poor surface evenness, difficult to control color difference by spraying technology.	★★★★★ Perfect surface evenness, roller coating technology for top surface.	★★★★★★ Wonderful surface evenness, continuous roller coating technology makes the panel with uniform gloss, small color difference, achieving better coating effect than spraying process.
Fire resistance	★★ Fire rated grade B, limited for high building. According to current production technology, enhancing fire resistance grade may lower the peeling strength.	★★★★★★ Fire rated grade A2, non combustible.	★★★★★ Fire rated grade A2, non combustible. Solvent-based adhesive technology reduces fire rated performance.	★★★★★★ Fire rated grade A2, non combustible.
Environmental protection index	★★★★★ Energy conservation, environmental protection, Recyclable.	★★★★★ Recyclable, high cost, low cost performance.	★★★ Adhesive technology, Solvent evaporation.	★★★★★★ Save materials, energy conservation, environmental protection.
Proceed	★★★★★ High production efficiency , perfect processing performance.	★ Multiple weld spots, high labor cost, low production efficiency, "double high" products.	★★★ Low production efficiency, poor strength of riveting at edge bending corner, easy to collapse.	★★★★★★ High production efficiency, better processing performance than ACP.
Others	Export code list alone, belong to the national support new material product.			Combine a variety of advantages of building's new generation product.

Product Profile

3A panel is compounded by three layer Aluminum sheets. Top Aluminum sheet is coated with excellent weather resistance TiO₂ coating or PVDF coating as decoration and protective finish, Middle Aluminum sheet is processed into both sides interlaced, evenly arrangement hollow and trapezoid column overhanging block with concave-convex, Bottom Aluminum sheet is cleaned completely and made chemosynthesis treatment on the surface.

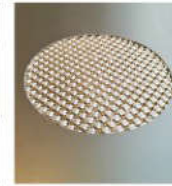
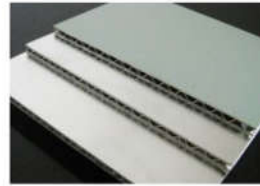
3A panel adopts full dimensions 3 layers structure and continue to use our special mature bonding technology, the attenuation rate of peeling strength is less than 5% within 20 years.

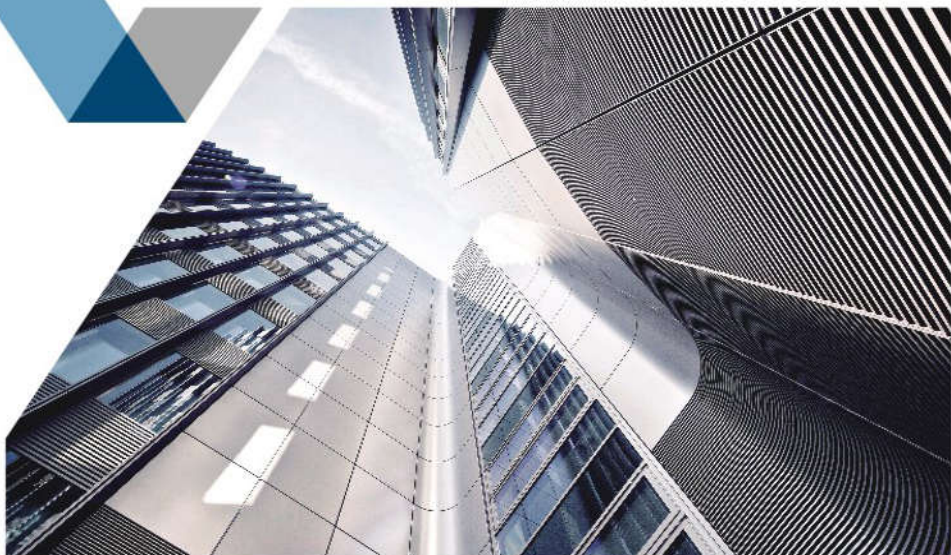
3A panel combines the advantages of several kinds of metal composite panel. It possesses excellent evenness, light weight and high strength, small change rate of compression resistance, unique texture, outstanding weather resistance, easy to process, superior fire resistance, high depreciation recovery rate etc.

Since 3A Panel adopts unique edge folding at the corner structure, not only improved bending resistance, wind-load resistance and fatigue life of cyclic loading of materials, but also further increased waterproof, anti-corrosive, penetration resistance and working life of curtain wall.

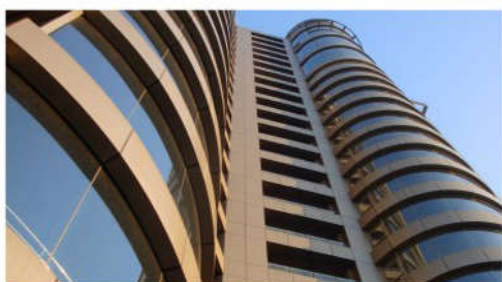
Basic Parameter

Basic Material	Metal Aluminum Panel	
Coating	TiO ₂ coating PVDF coating or wood-like film are available if choose other colors.	
Color	Several standard colors (color chart for 3A panel) 30 kinds of non standard colors are also available (refer to color chart of ALUTILE Aluminum Composite panel)	
Size	width Length Thickness	1220mm, 1570mm (Max.) 2440mm or as per client's request. 3mm, 4mm or 6mm
Fire Class	excellent fireproof resistance for A2 Class.	
Application scope	Metal Curtain Wall, Interior wall integrated panel, Public building's over length strip (≥6m) for ceiling, Functional special panels(Engine room, Operating theatre), special panel for internal cabins of boat.	





3A panel is widely used in airport, high-speed railway, metro, light rail, museum, archives center, conference and exhibition center, commercial complexes, high-grade office buildings, hotels and other public buildings and commercial buildings for high-end metal wall decoration.



Our Certificates



CE Certificate



SGS Test Report



Intertek Test Report



ASTM Standard Test



BS Standard Test



FHWA



ISO9001/ISO14001 System Certificate



International Astronautical Federation

JIANGXI ALUTILE BUILDING MATERIALS CO., LTD.

www.alutile.com

Add: No.1155, 2nd Chuangxin Road, State High-Tech. Development Zone, Nanchang, Jiangxi, China. PC: 330096

Tel: +86-791-88162180/88161917/88162161 Fax: +86-791-88162165 E-mail: alutile@alutile.com; alutile@china126.com