

Architectural Wall Cladding Solutions
Illusions Colour Chart
Transforms ideas into reality

larson[®]
Composite Panels

larcore[®] **A2**
Aluminium Honeycomb Panels



Alucoil[®]
Grupo Alibérico



Cité des Civilisations du Vin (Bordeaux, France)
HOLO Gold Silver
 Architect: X-TU

HOLO FINISHES

The survival of any species is very related to the capacity to adapt to the environment. **Alucoil**® has been inspired by the ease of chameleons to change their image to create this range of Holo finishes, where a finish becomes two and even three different colours depending on how the light affects the façade.

Eyesight different

#change colours
 #iridescent

larson® & larcove®

ALUMINIUM RANGE: HOLO



PURE WHITE GOLD 90G
 (ES1708)



RED GREEN 90G
 (ES1627)



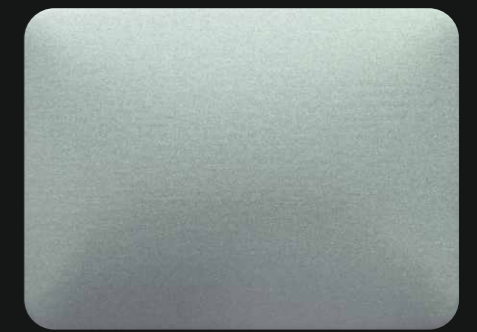
OPAL BLUE GREEN 90G
 (ES1560)



IRIODIN GOLD 30G
 (ES1861)



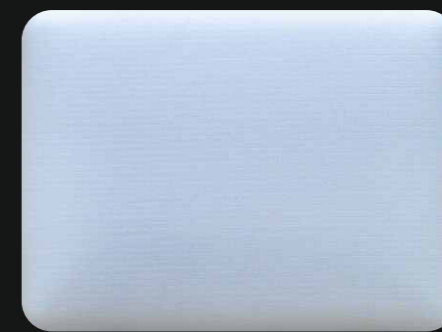
GOLD SILVER 30G
 (ES1711)



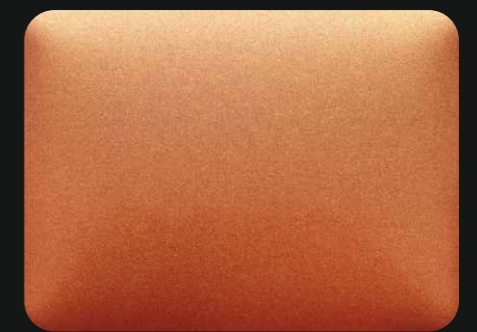
GREY PINK 90G
 (ES1488)



DESERT GOLD 90G
 (ES1995)



GALAXY BLUE 90G
 (ES1361)



RED ORANGE 90G
 (ES1666)



BLUE GOLD 80G
 (ES1613)



GREEN BLUE 30G
 (ES1614)



WHITE SILVER 90G
 (ES1388)



National College of High Speed Rail (Doncaster, UK)
ALUNATURAL Anodic Brushed Glossy
 Architect: Bond Bryan Architects

ALUNATURAL FINISHES

Because sometimes there is no better finish than the one given by our surroundings, the range of Alunatural finishes offer different types of reflection, sharpness and even colours depending on the desired target.

Reality Effect

#reflectioncolours
 #sharpnesscolours

larson® & larcove®

ALUMINIUM RANGE: ALUNATURAL



GOLD BRUSHED 60G
 (ES1544)



ELOX UMBER TL 10G
 (ES2033)



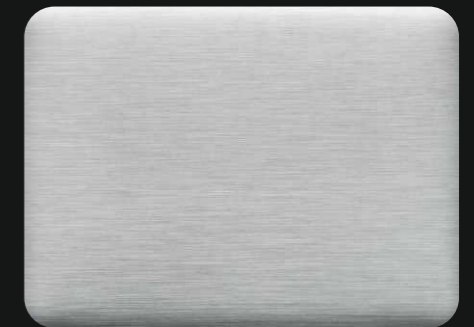
CHAMPAGNE BRUSHED 90G
 (ES1581)



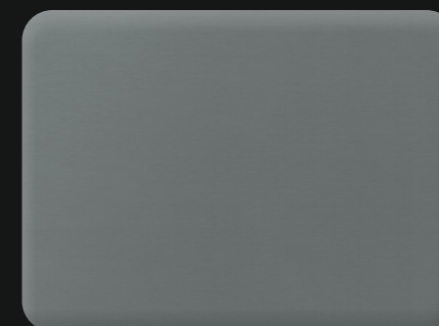
BRIGHT TL 90G
 (ES1448)



ANODIC BRUSHED GLOSSY 90G
 (ES1623)



ANODIC BRUSHED MATT 10G
 (ES1757)



TITANIUM BRUSHED 10G
 (ES1370)



QUARTZINC BRUSHED 10G
 (ES1736)

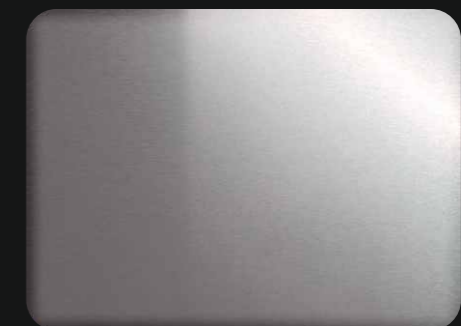


AMBER BRUSHED 40G
 (ES2111)

ALUMINIUM RANGE: REAL ANODIZED



REAL ANODIZED NATURAL 8µ
 (ES1341)
 Only **larson®**



REAL ANODIZED C-BRITE 8µ
 (ES2017)
 Only **larson®**

Attention to the special characteristics of the Alunatural and Real Anodized range finishes detailed in the technical specification (request them from your **Alucoil®** contact). Alunatural and Real Anodized finishes range not recommended in aggressive environments / coast.

Weybridge Business Park (Surrey, UK)
ANODIZED LOOK BLACK C35
Architect: Scott Brownrigg



ANODIZED LOOK FINISHES

To anodize is to protect, but also to beautify the aluminium. **Alucoil**® has a wide portfolio of finishes that match anodized finishes, keeping the folding and curving properties of composite panels. There are no limits to elegance.

Elegance in the design

#nolimitstoelegance

#protectcolours

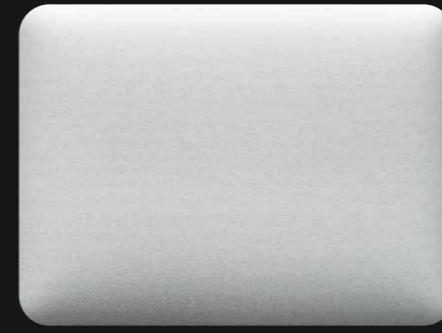
larson® & larcove®



Weybridge Business Park (Surrey, UK)
ANODIZED LOOK Black C35
Architect: Scott Brownrigg



ALUMINIUM RANGE: ANODIZED LOOK



SILVER EV1
(ES1749)



SILVER BRONZE C31
(ES1635)



LIGHT BRONZE C32
(ES1417)



MIDDLE BRONZE C33
(ES1444)



DARK BRONZE C34
(ES1427)



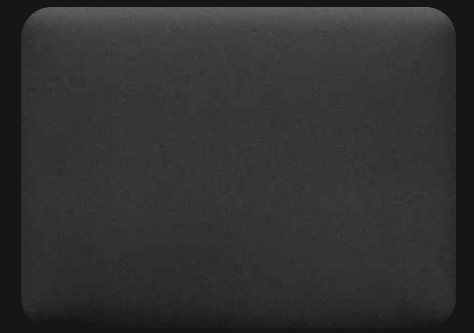
BLACK C35
(ES1419)



AUTUMN
(ES1633)



ART NOUVEAU GOLD
(ES1483)



DARK GREY
(ES1459)



SHADOW GREY 9007
(ES2085)



DARK COPPER
(ES1799)

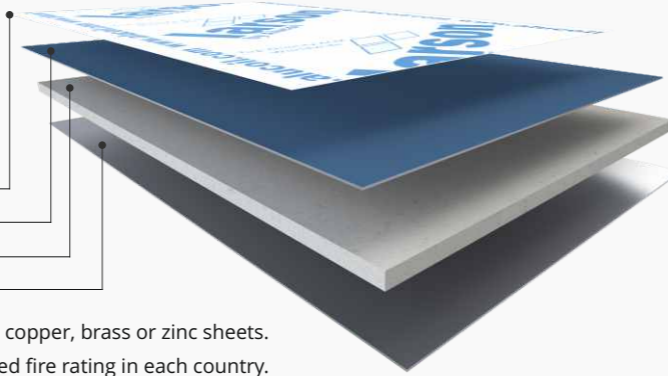


CHAMPAGNE BRONZE
(ES1800)

larson® by Alucoil®

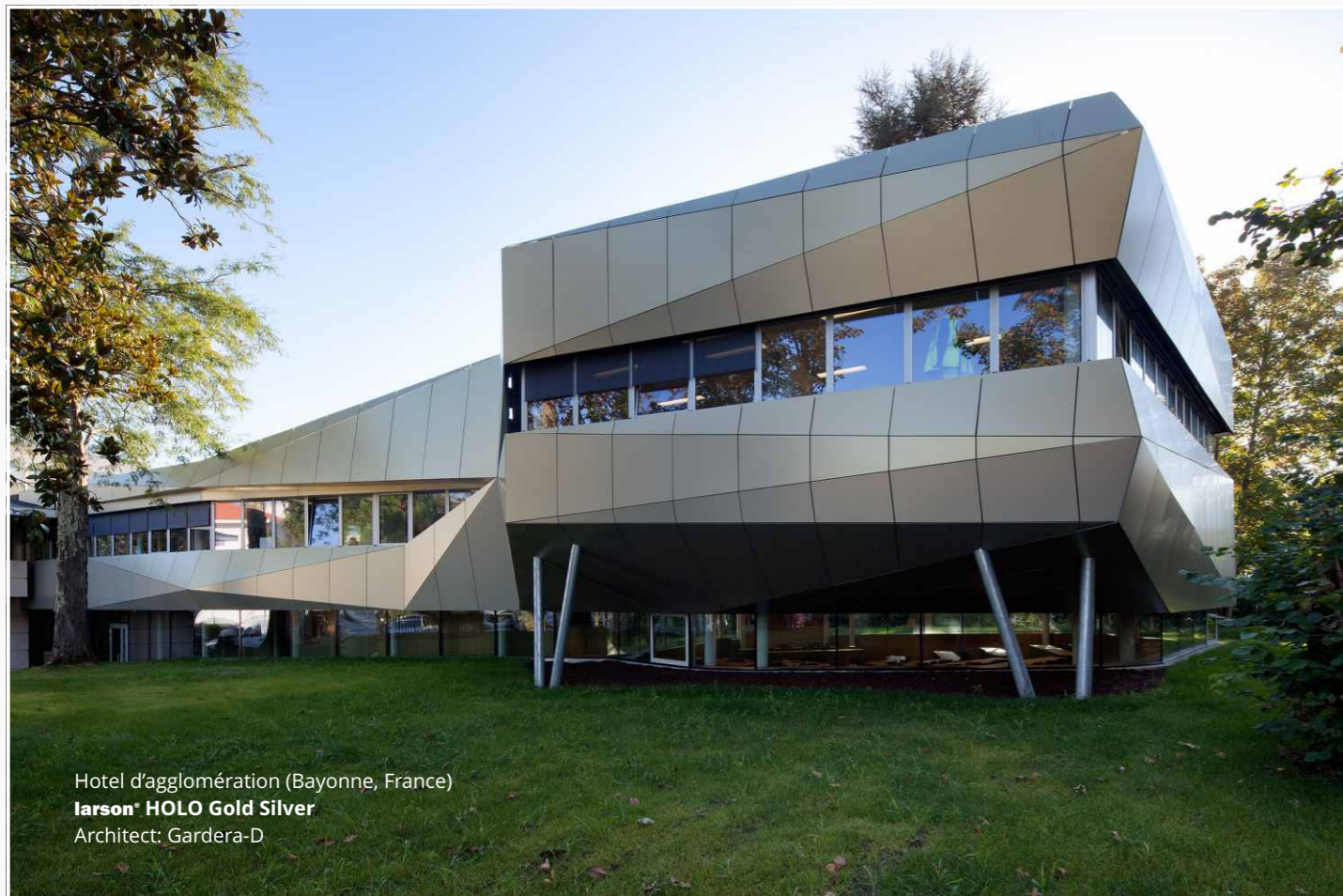
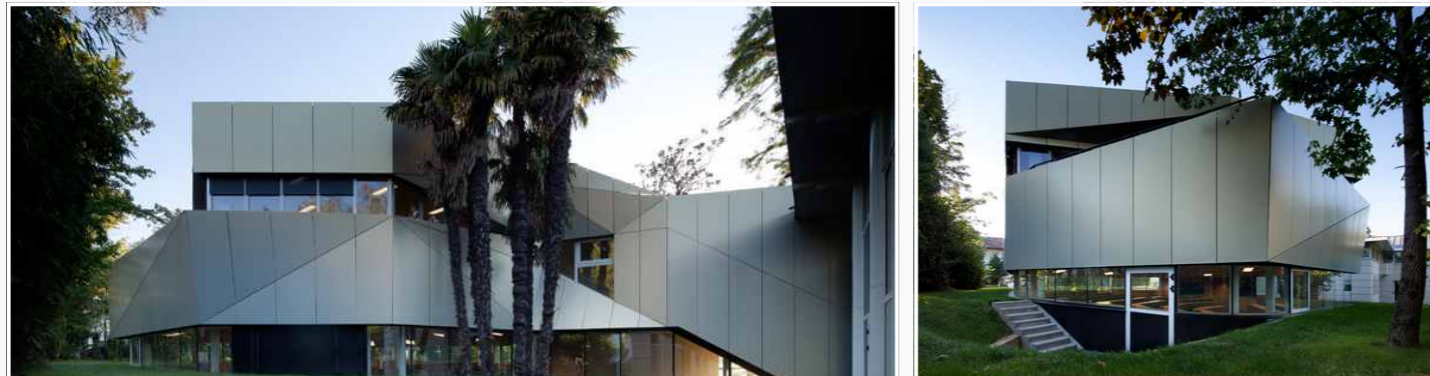
Composite panels are a high-tech product for architectural façade cladding. According to the external and internal metal sheets and the type of core that joins both metal sheets the panel can be:

- Protective film
- Aluminium⁽¹⁾
- Core⁽²⁾
- Aluminium⁽¹⁾



⁽¹⁾ With the **Metals** range the aluminium sheets are replaced for stainless steel, copper, brass or zinc sheets.
⁽²⁾ There are 3 types of core depending on the required fire rating in each country.

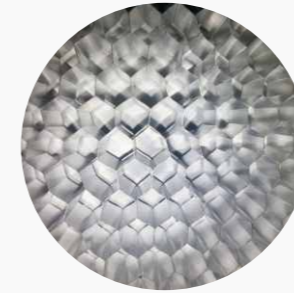
larson® A2 panel was developed for projects in which the highest fire classification is required. A2-s1, d0 classification (EN 13501-1).
larson® FR panels are formed with a FR mineral core that delays its combustion. B-s1, d0 classification (EN 13501-1).
Alucoil® also manufactures a composite panel bonded with a polyethylene PE core. This product is meant to be used only on low rise buildings, canopies, signage and corporate identity.



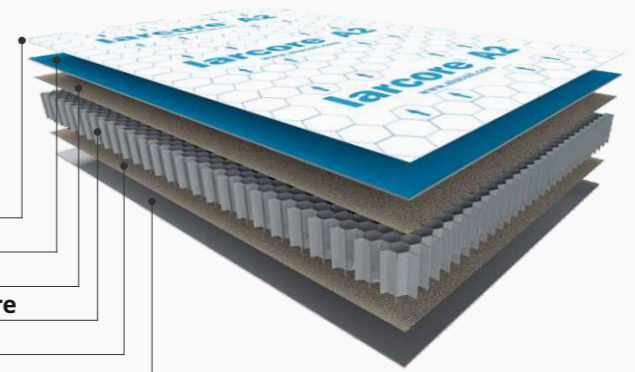
Hotel d'agglomération (Bayonne, France)
larson® HOLO Gold Silver
 Architect: Gardera-D

larcove® A2 by Alucoil®

Aluminium honeycomb panels were developed for architectural façade cladding. It is an extremely lightweight and rigid panel which is fire proof, non-toxic, recyclable, insulating and energy efficient. A perfect panel for large modulation with the possibility of choosing among an infinite range of finishes.



- Protective film
- Aluminium
- Bonding layer
- Aluminium honeycomb core
- Bonding layer
- Aluminium



Fire Reaction Classification CLASS A2-s1, d0 EN 13501-1



NEW WEB

Alucoil® Design

Grupo Alibérico

Endless Architectural Design Possibilities



www.alucoildesign.com



Orygen hospital (Melbourne, Australia)
larcove® A2 METALS Zinc Red, Zinc Green & Zinc Slate
 Architect: Billard Leece Partnership

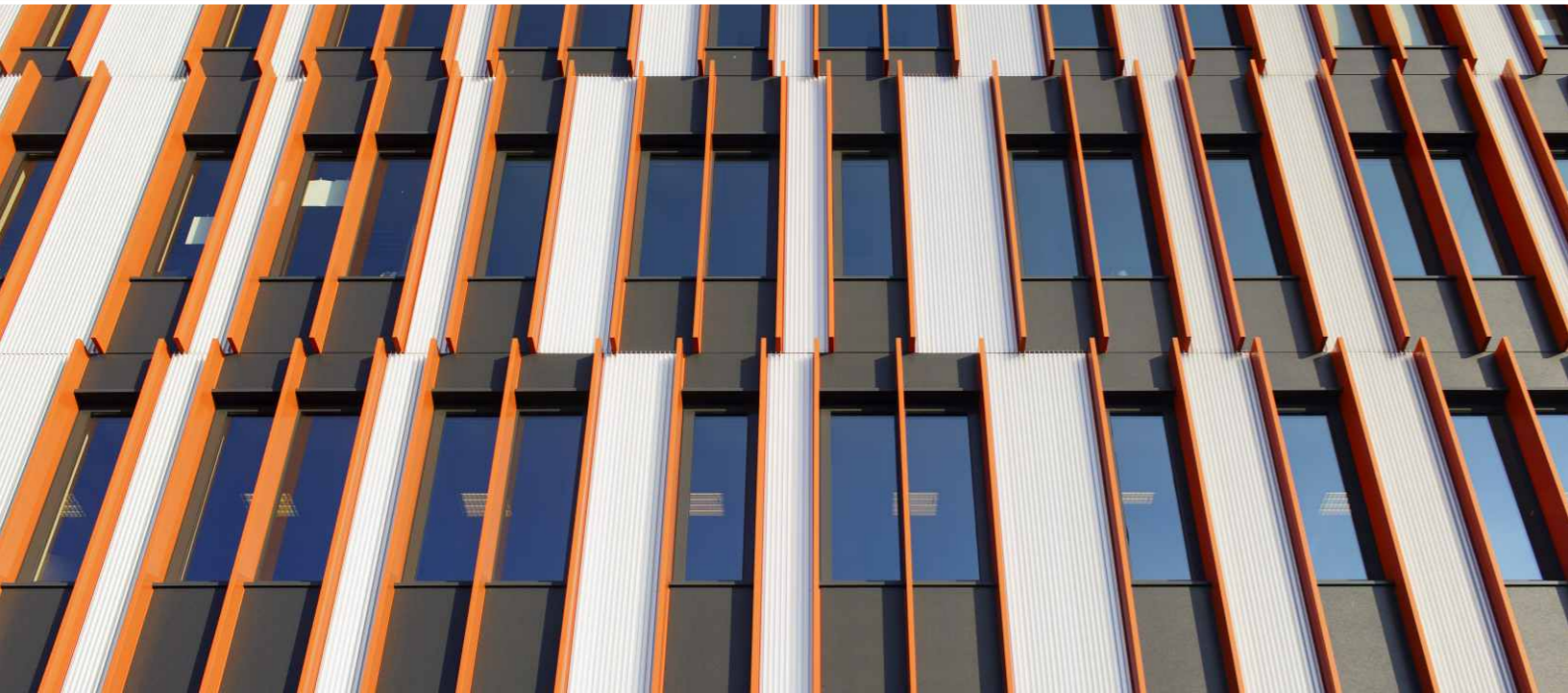
HMC School Rotterdam (Rotterdam, Holland)
TEXTURED BASALT
RAL 2001 & 7016
Architect: RoosRos Architecten



TEXTURED & DESIGN FINISHES

Why be satisfied with any kind of finish if we can match the desired texture with the maximum coating quality?
The range of customized colours mimics the touch of ceramics, the oxide of metals, the texture of basalt all with the durability and lightweight qualities of a composite panel.

larson® & larcove®



ALUMINIUM RANGE: TEXTURED & DESIGN



TEXTURED OXIDE 1
(ES1869)



TEXTURED OXIDE 2
(ES1868)



TEXTURED ROUGH WHITE
(ES1924)



TEXTURED ROUGH SILVER
(ES1950)



TEXTURED ROUGH GREY PEARLS
(ES1475)



TEXTURED ROUGH SLATE
(ES1783)



TEXTURED GLISTERING SNOW
(ES1598)



TEXTURED GLISTERING SAND
(ES1649)



TEXTURED BASALT
(ES1652)



TEXTURED JET BLACK
(ES2012)

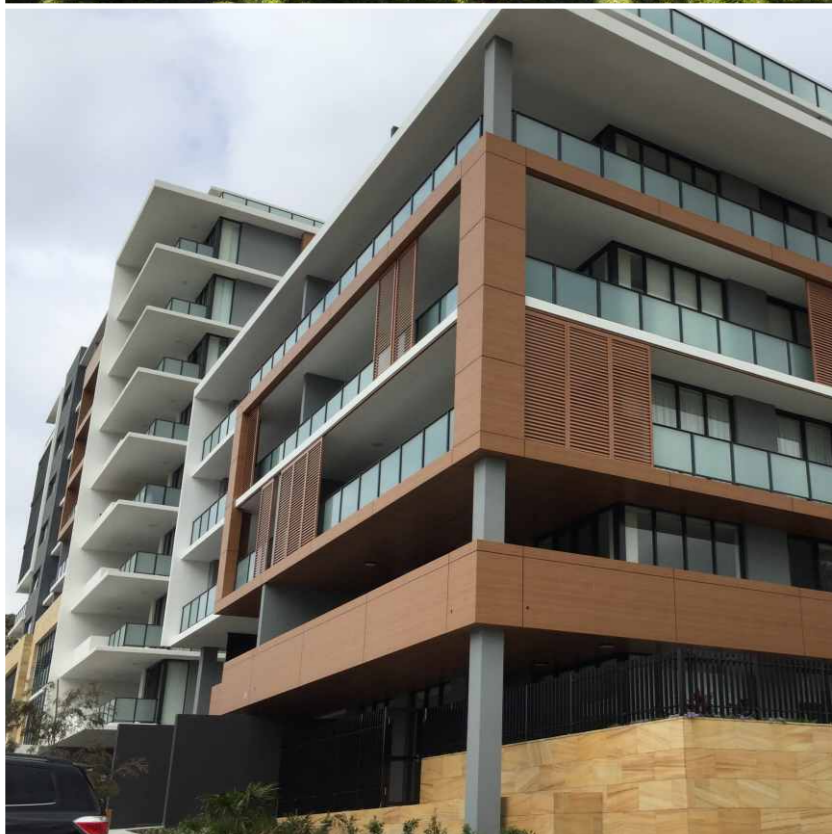
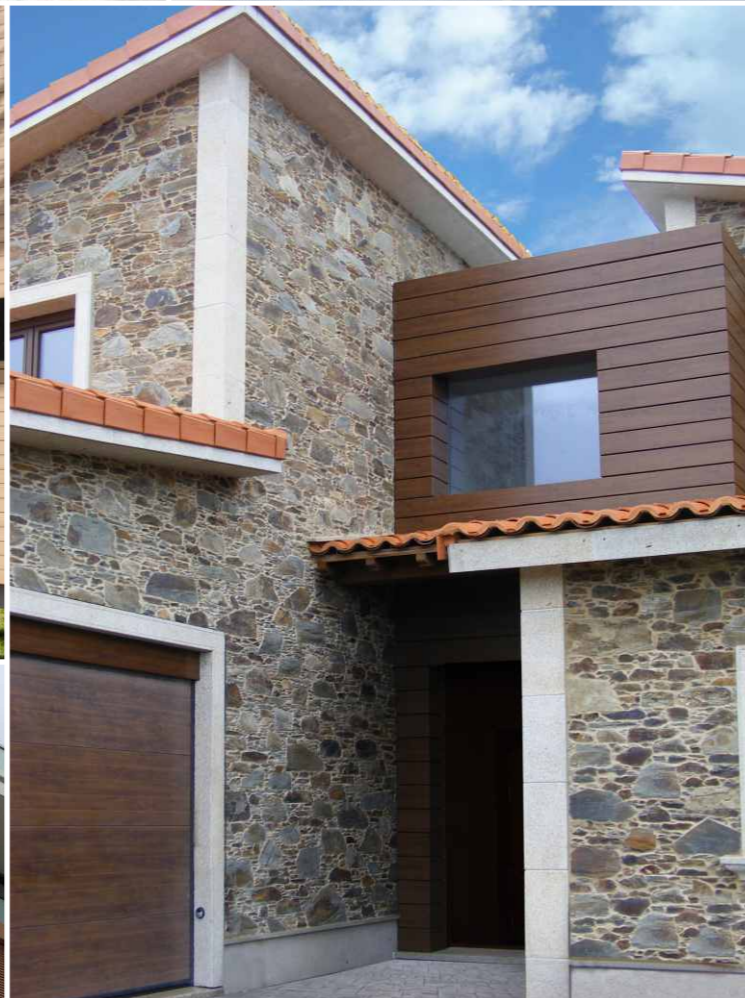
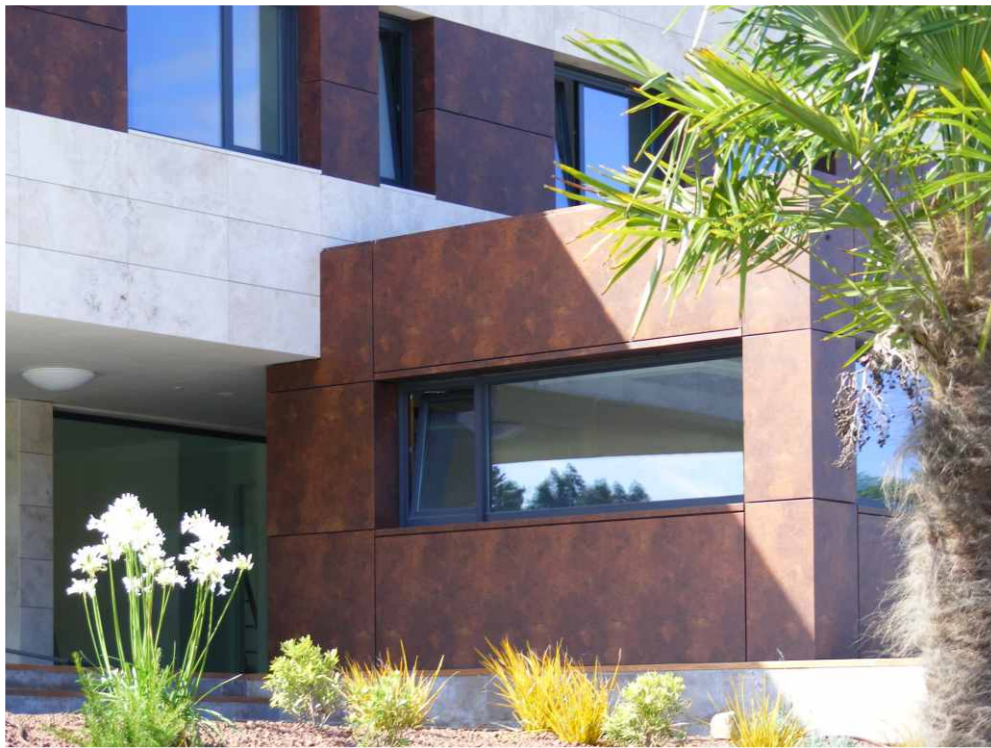


DESIGN SPOTTED CONCRETE
(ES1689)



DESIGN TRAVERTINO
(ES1674)

Projects with personality #customized #exclusive



DESIGN WEATHERED ZINC 1
(ES1327)



DESIGN WEATHERED ZINC 2
(ES1540)



DESIGN CORTEN STEEL 2
(ES1528)



DESIGN WOOD COLONIAL WALNUT
(ES1333)



DESIGN WOOD COLONIAL RED
(ES1482)



DESIGN WOOD DARK WENGE
(ES1463)



DESIGN WOOD LIGHT WENGE
(ES1665)



DESIGN WOOD ELEGANT OAK
(ES1535)



DESIGN WOOD ENGLISH CHERRY
(ES1524)

ALUMINIUM RANGE: ACM PVC 200µ



DESIGN PVC WOOD CONCRETE OAK
(ES2107)



DESIGN PVC WOOD ALPINO OAK
(ES2108)



DESIGN PVC WOOD MALTA OAK
(ES2109)

Consult possibilities and properties concerning ACM PVC 200µ



METALS RANGE

Natural appearance makes these composites the ideal ecological solution and provides the sensation of liveliness from nature's finest elements.

Possibilities with **larson**[®] composite panels:

- a) **Stainless Steel**
- b) **Copper**
- c) **Brass**
- d) **Zinc**

Possibilities with **larcore**[®] A2 Honeycomb panels:

- a) **Zinc**

larson[®] & **larcore**[®]

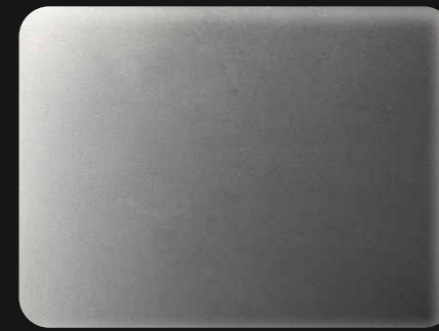
Isenberg School of Management Business Innovation Hub (Amherst, MA, United States)

METALS COPPER

Architect: Bjarke Ingels Group



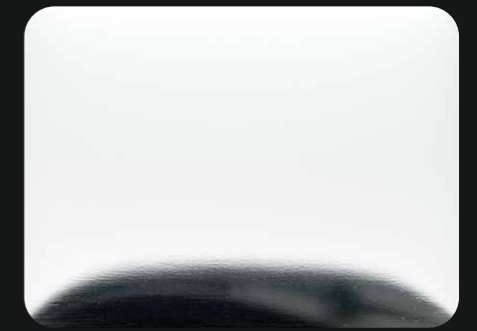
METALS RANGE



STAINLESS STEEL 2D
Only **larson**[®]



STAINLESS STEEL WF30
Only **larson**[®]



STAINLESS STEEL BRILLIANT BA
Only **larson**[®]



COPPER NATURAL
Only **larson**[®]



BRASS NATURAL
Only **larson**[®]



ZINC BLUE
(ES1522)



ZINC SLATE
(ES1274)



ZINC RED
(ES1275)



ZINC GREEN
(ES1523)



ZINC GOLD
(ES2096)



ZINC BROWN
(ES1556)

Alucoil[®] S.A.U. reserves the right to change or remove information contained in this brochure without prior notice.
Please visit us at www.alucoil.com to check the latest version.



Alucoil®

Grupo Alibérico

Specialists in the manufacture of
Advanced Materials for Architecture

Polígono Industrial de Bayas C/ Ircio. Parcelas R72-77
09200 Miranda de Ebro, Burgos - SPAIN
Tel.: +34 947 333 320 - Fax: +34 947 324 913
• info@alucoil.com

www.alucoil.com